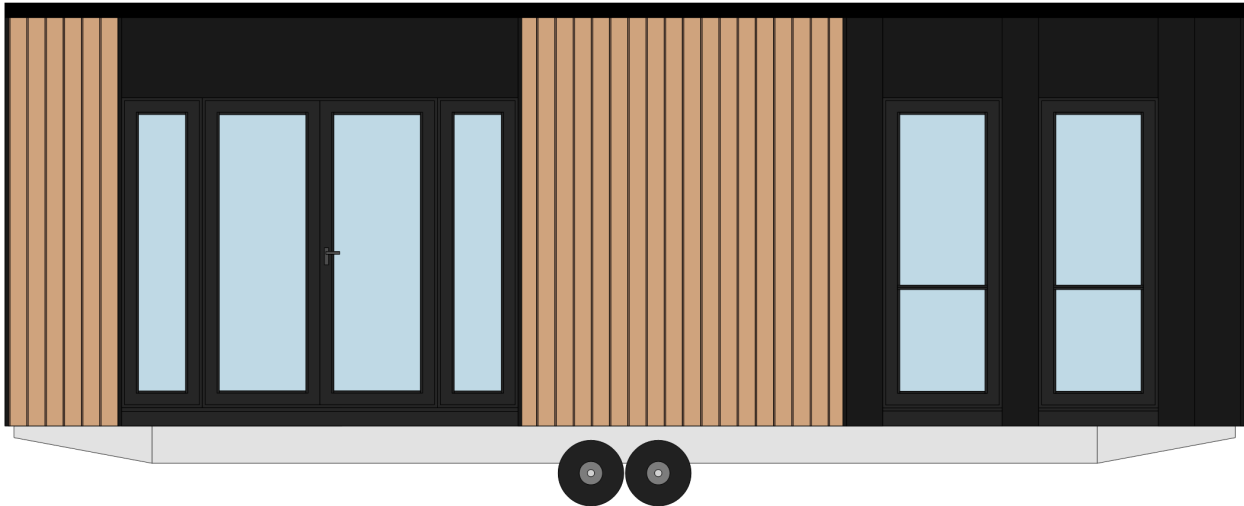
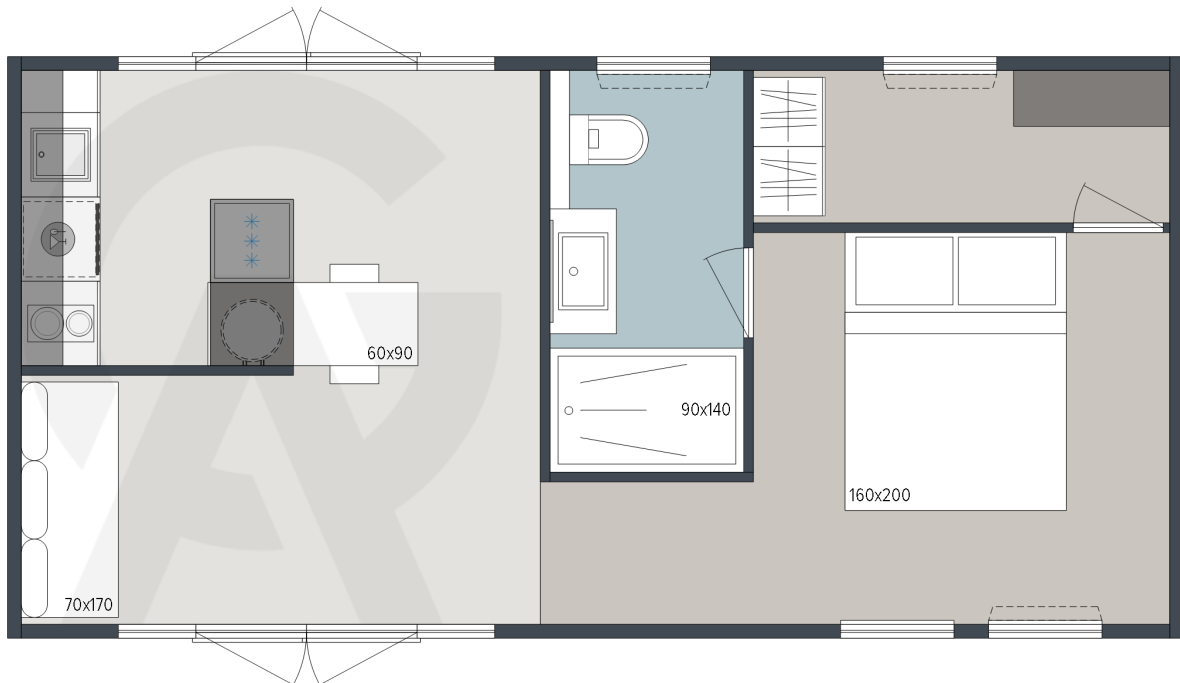


## **Q26 – C8543 B11 - A**

**Front view**



**Layout**



**Legend:** x – in price , o – optional / - not available

## 1. GENERAL INFORMATION

Area	36,00
Number of beds	2
Number of bedrooms	1
Number of bathrooms	1
Length	8,5
Width	3,5
Height	3,4

### 1.1 GENERAL CHASSIS INFORMATION

Hot-dip galvanized chassis	x
Two-axle chassis	x
Detachable towbar with wheel	x
Leveling feet	o

### 1.2 FLOOR

Vynil roll flooring	x
GA flooring tech. (GFT) 80 mm	x
Glued Vynil roll flooring	x
VPIL tech. (Vapor permeable insulation layer)	x
Moisture resistant floor base	x
Floor decor: A	x
Floor decor: B	x
Floor decor: C	o
Floor decor: D	o

### 1.3 EXTERIOR WALLS

GWT (GA wall tech) with ventilated facade 110 mm	x
2VPIL tech. (Double Vapor permeable insulation layer)	x
Exterior wall decor A	x
Exterior wall decor B	x
Exterior wall decor C	x
Exterior wall decor D	x

### 1.4 WINDOWS AND DOORS

PVC white windows and doors with termopan glass	x
AVP (Avtomated venitlation system)	o
Tinted windows in bathrooms	x
Built-in blinds on all windows	-
Master cylinder	o
Master key	o
PVC anthracite windows and doors with termopan glass	-
Door holder	x
Mosquito nets on all windows - white	o
Pleated bedroom shade	o
Double Balcony doors 2x 270x210	x
Fixed windows 80x210	x
Single Balcony door 2x 80x210	x
Horizontal window 150x70	/
Waterheater door 60x150	x
Bathroom window 60x100	x
Bathroom window 60x210	/
Window 80x110	/
SLIDING ALU door 270 x 210	/

### 1.5 ROOF AND CEILING

Single-pitched Roof	x
Galvanized painted steel roof	x
Roof colour: White	x
Roof insulation mineral wool 40 mm with	x
Roof insulation mineral wool 100 mm with	/
Gutters	x
Vertical draining pipes	x
Flat ceiling in all rooms 242 cm	x
Gutter guard for leaves	/
Roof construction class D	x

### 1.6 WATER AND GAS

External connector to water facilities with:

- Connection to central warmwater system	x
- Connection to central wastewater system	x
Chrome tabs	x
Central waste water outlet	x
External access to water heater	?
Gas water heater	o
Gas connection in in box: Propan/Butan 30 mBar	o
External gas connection: Methan	o
External connector to water facilities with:	
- Electrical water heater 50l	x
- Electrical water heater 80l	o
- Electrical water heater 100	/
Water filter	/

## 1.7 ELECTRICITY

White FLUSH-MOUNTED sockets and switches	x
- Anthracite FLUSH-MOUNTED sockets and switches	o
- White FLUSH-MOUNTED sockets and switches	o
- Black FLUSH-MOUNTED sockets and switches	o
- Anthracite matt/gloss FLUSH-MOUNTED sockets and switches	o
External connection 32A, 400V, 3P+N+E	o
External socket white	x
Reading LED lights in all rooms	x
Ceiling LED lights in all rooms	x
LED lightning in kitchen	o
Airconditioning with in wall installed sistem	x
Airco sensors for entrance door	o
Airco sensors for all windows except bathroom	o
TV socket	o
Additional TV and aerial socket in master bedroom	/
External socket anthracite	o
Ambiental LED lightning in living room and slepping rooms	/
Basic Ambiental LED lightning in living room and slepping rooms	o

## 1.8 HEATING AND COOLING

Air-conditioning	x
IR heater in living room	/
IR heater in bedrooms	o
Electrical towel heater in bathroom	o
Electrical underfloor heating system	/
Insulated water pipes with electrical heating	o

## 2.0 INTERIOR

Dimout curtains	O
Daily curtains	X
Interior separation walls 65 mm	X
Interior doors 42 mm with doorframes	X
Door stopper	X
Inox doorhooks	X
Soft close for furniture	O
Finishing lath	X

## 2.1 LIVING ROOM

Sofa	X
Sofa extendable	O
4 Chairs	X
Decorativ wall in living room	/
Dinning table	X
Coffee table	/
Hangers	X
Mirror	O
Silicone corner finishing	X
TV holder	/
TV holder with fold function.	/
TV	/

## 2.2 KITCHEN

Gas hob with 2 burners	X
Glas ceramic hob with 2 burners	X
Induction hob with 2 burners	O
Kitchen hood with EXTERNAL drain	X
Stainless steel sink with drainer	X
Microwave oven	O
Dishwasher	X
Kitchen backsplash: Glass white wall panel (over the cooker)	X
Selfstanding white fridge with freezer	X
Built-in frdige with freezer	O
Built-in dishwasher	O
Built-in microwave oven	O
White furniture corpus	X
Decore furniture fronts	X

## 2.3 MASTER BEDROOM

Double bed with wooden bottom 160 x 200	X
Foam mattresses	X
Ortopedic mattresses	O
Wooden headboard	X
Bedside nightstand	X
Bedside shelves	X
Cupboards over the bed	X
Wardrobe	X
Mirror	O
Safe in master bedroom	O
Wooden bed upholstery	O
Upholstered bed	O



**2.5 BATHROOM 1**

Shower cabin 80x120,	/
Shower cabin 80x140	/
Shower cabin 90x120	/
Shower cabin 90x140	x
Shower doors with security glass	x
Shower rail with sliding shower holder	x
Mirror with shelf	x
Ceraminc toilet with toilet seat	x
Shower rail with adjustable sliding shower holder and rain shower head	x
Built-in toilet tank with saving function	x
Towel holder	x
Toilet roll holder	x
Hangers	x
Hairdryer	o
PVC wall decor A	x
PVC wall decor B	x
PVC wall decor C	x
PVC wall decor D	x
PVC wall decor E	x